

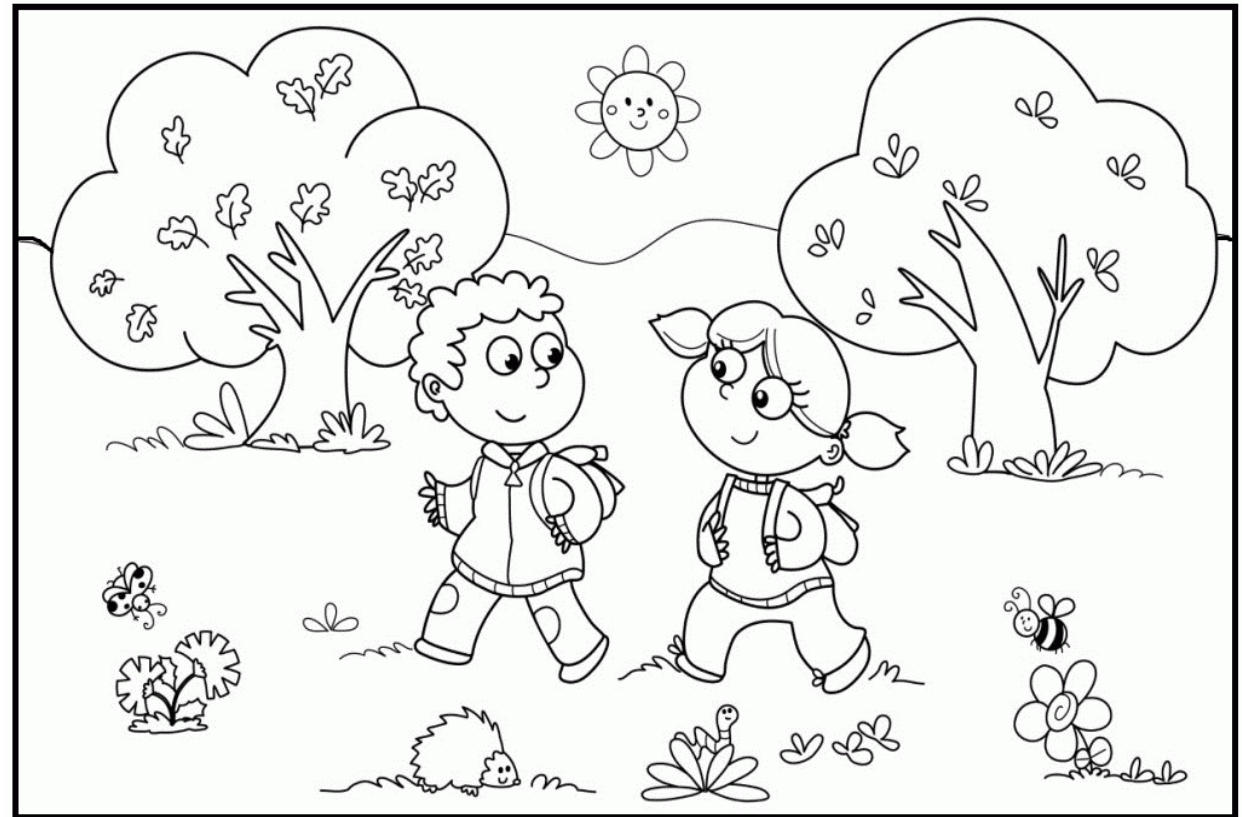
# Trees for Tomorrow



**YORK COUNTY  
FOREVER**

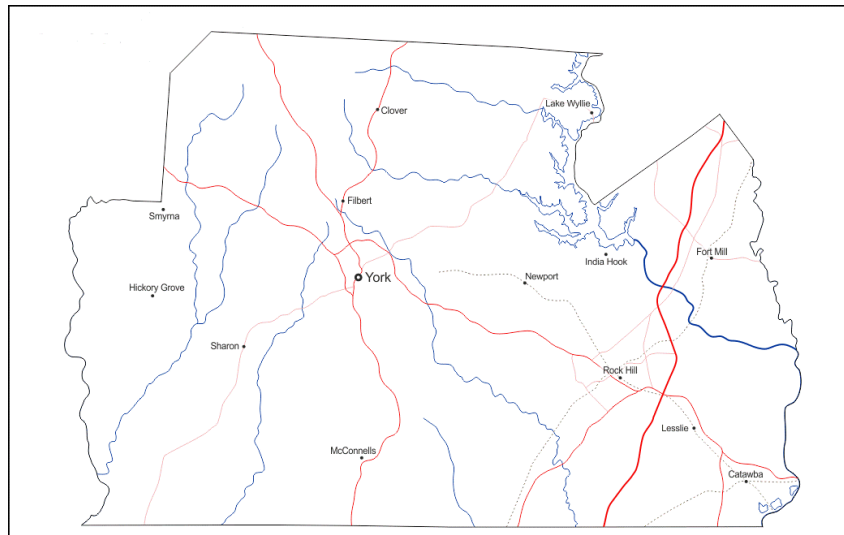
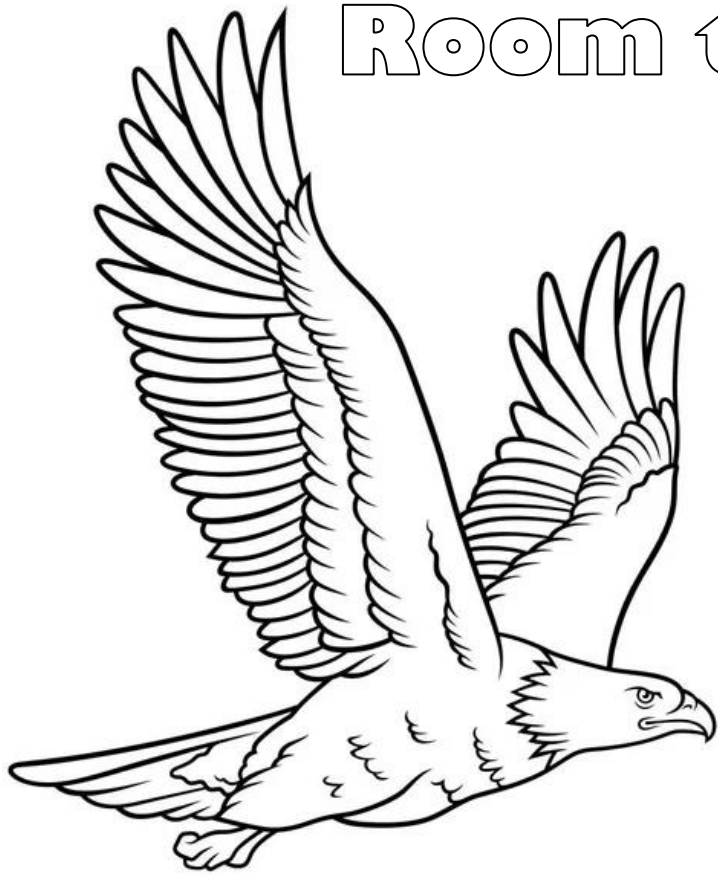
# And Trees for Today

# Places to Go and Places to Play



**YORK COUNTY  
FOREVER**

# Room to Roam



See if you can find a few of the **special places** that **York County Forever** has helped save...

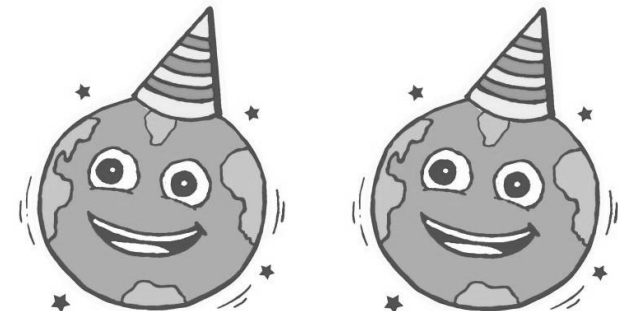
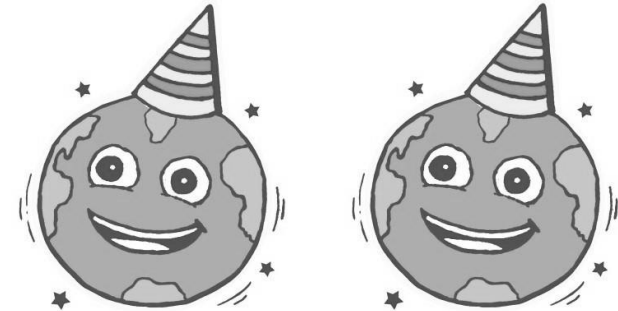
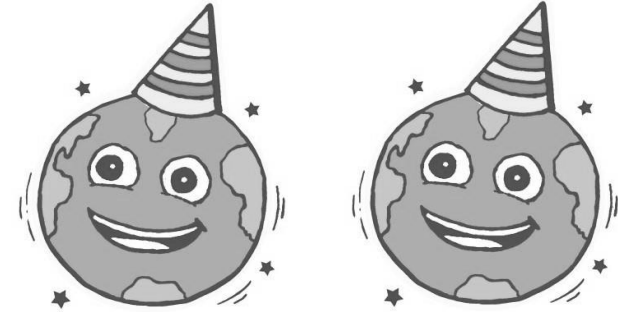
Catawba Bend Preserve  
Chappell Heritage Farm  
Clover Rock Outcrop  
Cotton Hills Farm  
Dorsey Patrick Dog Park  
Fishing Creek Tract  
Flying King Ranch

Forlines Farm  
Kirsh WMA  
Moonshine Prairie  
Nanny's Mountain  
Smith's Ford Farm  
White Homestead  
Woodend Farm  
Worth Mountain Park

K R A P G O D K C I R T A P Y E S R O D  
W O R T H M O U N T A I N P A R K Q V M  
M T P M S K E I Q L Y B N A Y M I D I Q  
V R C R H N E B Q E N T U P Y R Q M Q X  
G V A A B X T W N O S I Q Z Q G Q D O O  
M R A F E G A T I R E H L L E P P A H C  
R I O D S W H I T E H O M E S T E A D O  
N B K N N E R Z L Q K S M X K K K A H T  
C P Y E Q G N O P D X I G T H B X R U T  
I Y X D U C J I D V N C R M F S R B C O  
S F Z O Y Z Y Y L X J Y K S C D H G L N  
Z X W O Y Y A A D R J I N C H R N P H H  
T B S W W Y T C R B O M P E H W L N R I  
Z S M I T H S F O R D F A R M A M F X L  
E V R E S E R P D N E B A B W A T A C L  
L P O R C T U O K C O R R E V O L C I S  
Q P W T C A R T K E E R C G N I H S I F  
N I A T N U O M S Y N N A N J V P W H A  
H C N A R G N I K G N I Y L F N O X F R  
W I Q E E I R I A R P E N I H S N O O M



## Earth Day Coloring Booklet



### For more information, contact:

Trish DeHond  
York County  
Planning & Development Services Department  
18 W. Liberty St.  
P.O. Box 96  
York SC 29745-0096  
(843) 909-7221

[patricia.dehond@yorkcountygov.com](mailto:patricia.dehond@yorkcountygov.com)  
[www.yorkcountygov.com/340/York-County-Forever](http://www.yorkcountygov.com/340/York-County-Forever)

On Land near my Home

