

FOR MORE INFORMATION

The Open Burning regulation (Regulation 61-62.2, Prohibition of Open Burning, June 25, 2004) is included within this brochure and is available through your local DHEC Environmental Quality Control regional office.

For contact information to your local DHEC office, visit the link below:

www.scdhec.gov/HomeAndEnvironment/DHECLocations/

OTHER IMPORTANT NUMBERS

FORESTRY COMMISSION
1-800-777-3473

**BURNING YARD DEBRIS
OUTSIDE CITY/TOWN LIMITS**

Find the toll-free number for your county at
www.state.sc.us/forest/fireburn.htm.

STATE RECYCLING CENTER
1-800-SO-USE-IT (1-800-768-7348)



South Carolina Department of Health
and Environmental Control

www.scdhec.gov/baq

CR-010788 7/14

OPEN BURNING IS PROHIBITED EXCEPT AS PROVIDED BELOW:

- A. Open burning of leaves, tree branches, or yard trimmings originating on the premises of private residences and burned on those premises.
 - B. Open burning in connection with the preparation of food for immediate consumption.
 - C. Campfires and fires used solely for recreational purposes, ceremonial occasions, or human warmth. Fires set for the purpose of human warmth must use only clean wood products (woody vegetation, leaves, or wood which is not coated with stain, paint, glue or other coating material, and not treated lumber).
 - D. Fires purposely set in accordance with Smoke Management Guidelines for Vegetative Debris Burning Operations in South Carolina, administered by the South Carolina Forestry Commission and acceptable to the Department to include the following:
 1. Prescribed burning of forest lands for specific management practices;
 2. Fires purposely set for agricultural control of diseases, weeds, pests, and for other specific agricultural purposes; and
 3. Open burning of trees, brush, grass and other vegetable matter for game management purposes.
 - E. Open burning in areas other than predominantly residential for the purpose of land clearing or right-of-way maintenance. This will be exempt only if the following minimum conditions are followed:
 1. The location of the burning must be a sufficient distance but not less than one-thousand (1000) feet from public roadways and all residential, commercial, and industrial sites not a part of the contiguous property on which the burning is conducted;
 2. Winds during the time of the burning must be away from any area in which the ambient air may be significantly affected by smoke from the burning if that area contains a public roadway or a residential, commercial, or industrial site;
 3. The material to be burned must have been generated onsite and not moved to the site from another location;
 4. The amount of dirt on the material being burned must be minimized;
 5. No heavy oils, asphaltic materials, items containing natural or synthetic rubber, or any materials other than plant growth may be burned;
 - F. Fires set for the purposes of training fire-fighting personnel and conducted at permanent fire-fighter training facilities. Prior Department approval is required in order to obtain the exemption as a permanently established training site. Fires set for the purpose of fire-fighter training at non-permanent locations must receive Department approval prior to the initiation of any burning activity. Materials used for fire-fighter training cannot contain asbestos, heavy oils, asphaltic material, plastic or rubber without express written consent from the Department.
 - G. Open burning on the property where it occurs of residential construction waste from building and construction operations will be exempt only if the following conditions are met:
 1. The material being burned is residential construction waste associated with the building and construction of one and two family dwellings only;
 2. The location of the burning is at least five-hundred (500) feet from any occupied structure other than a dwelling or structure located on the property on which the burning is conducted;
 3. Heavy oils, treated wood products, asphaltic materials, items containing natural or synthetic rubber, or any other trade wastes which produce smoke in excess of forty (40) percent opacity are not burned;
 4. The burning does not occur during the ozone season (April 1 through October 30); and
 5. The burning is conducted only between the hours of 9:00 a.m. and 3:00 p.m.
 - H. Open burning, in remote or specified areas:
 1. For non-recurring unusual circumstances.
 2. For experimental burning for purposes of data gathering and research.
- However, prior approval for these types of burning (in subparagraph H above) must be obtained from the Department.



Open Burning

Know the Facts. Know the Laws.

Know the Risks.

LEARN ABOUT IT

In South Carolina, burning has been a common way to get rid of leaves and tree limbs, to clear farm lands, and to manage wildlife areas. Additionally, some people burn treated lumber, construction debris, motor oil, paint and painted materials, plastics and rubber. Burning these materials can release harmful toxic chemicals, pollute the air, cause health problems, and harm the environment. That is why there are State laws to limit outdoor burning.

Open Burning - is the burning of any material in an open fire or an outdoor container when specifically designed equipment is not used to control the combustion or air pollution from the fire.

South Carolina allows certain kinds of open burning if the burning does not cause problems and if it is not prohibited by local governments. There are alternatives to open burning. If you decide to burn, a good rule to follow is: *If it doesn't grow, don't burn it.*

Call the nearest Department of Health and Environmental Control (DHEC) Environmental Quality Control regional office for information on laws about burning in your area.

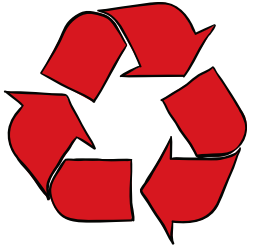
You may also need to notify the S.C. Forestry Commission before you begin to burn.

- For open burning of yard debris outside city or town limits, you should call a toll-free number for the county in which you live. A list of these numbers can be found on the internet at www.state.sc.us/forest/fireburn.htm
- If you plan to burn anything else, call the Forestry Commission at **1-800-777-3473**.
- Remember, even though you may have notified the Forestry Commission, you must still follow DHEC's rules for open burning.

IT IS AGAINST THE LAW TO OPEN BURN THESE MATERIALS:



REDUCE, REUSE, RECYCLE



There are cleaner and easier ways to dispose of waste than burning it.

- To help reduce yard waste, consider chipping, shredding, and composting. Many areas have curbside pickup for yard waste.
- Newspapers are recyclable.
- Used oil should be taken to a recycling center.
- Some counties schedule a day each year to collect hazardous household chemicals.

For additional information on recycling centers in your community, call 1-800-SO-USE-IT (1-800-768-7348) for the State Recycling Center, or visit the link below:

www.scdhec.gov/HomeAndEnvironment/Recycling/WheretorecycleLocally/

THINK ABOUT IT

Open burning can cause health problems for you and your neighbors. The air pollution from open burning can be a special concern for children and people with respiratory diseases like asthma, emphysema, and chronic bronchitis. You can help keep South Carolina's air clean by following the rules for open burning and finding healthy alternatives to burning.